



After World War 2 the British Legion occupied part of the building and other rooms were used for various community activities.

The building was unused for a period in the early 1980's and there were several proposals submitted for planning around this time, including an application to demolish the building in October 1986! (Planning Ref H26/380/86/). The building was listed Grade II in December 1986, and the application was refused!

Most recently the ground floor of the building has been used as an office and photography studio for a marketing company.



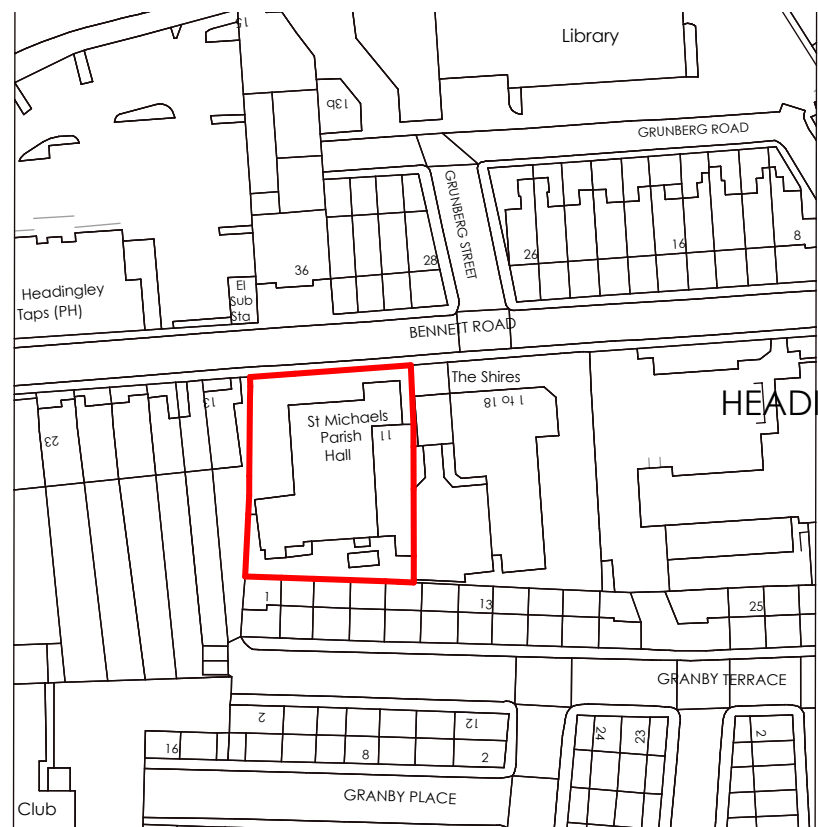
The photography studio, formed from the original classrooms and part of the original corridor. The windows are boarded over creating a dark space, whilst the corridor is bypassed in an awkward arrangement at the corner of the building.



An original archway obscured by the skewed corridor partition.



The Old Tea Room is now just a store with a suspended ceiling.



Location Plan



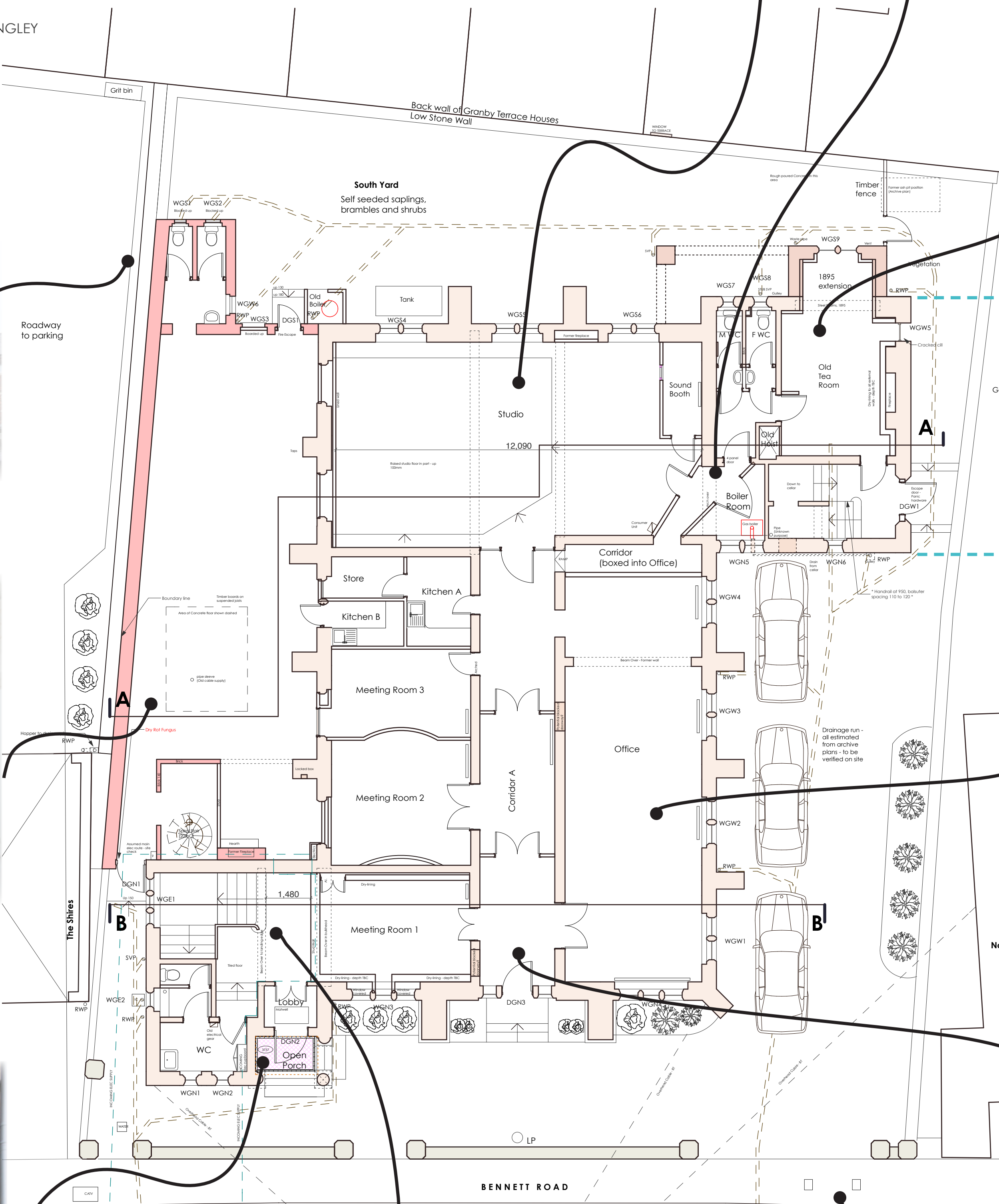
The wall and roof of the 1893 extension are in poor condition, seen here from The Shires car park. (Accessed with kind permission of Yorkshire Housing).



The interior of the 1893 extension (former billiard room). To the right are the original stone buttresses, plastered and painted. The valley gutter has leaked badly in the past along this original wall and the timber floor below is badly decayed. This part of the building was last used by a printing company.

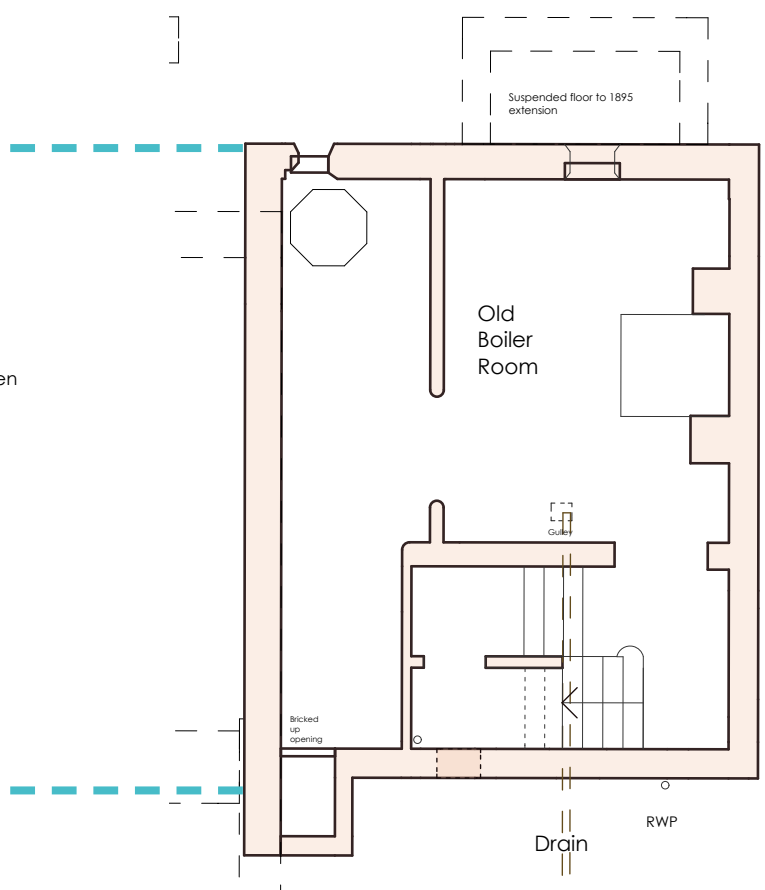


The impressive Corinthian entrance porch with carvings of St. Michael and the Dragon and a Royal Coat of Arms in the tympanum. The covered shelter has been used by the homeless in the past, as seen in this photo. All entrances to the building are raised with steps.



Ground Floor Plan 1:100

The generous main staircase to the first floor hall with concrete treads, twisted wrought iron balusters and mahogany handrail. The rail to the landing is too low to be effective guarding against fall and the gaps between the balusters are above 100mm, meaning a child's head could get stuck between.



Basement Plan



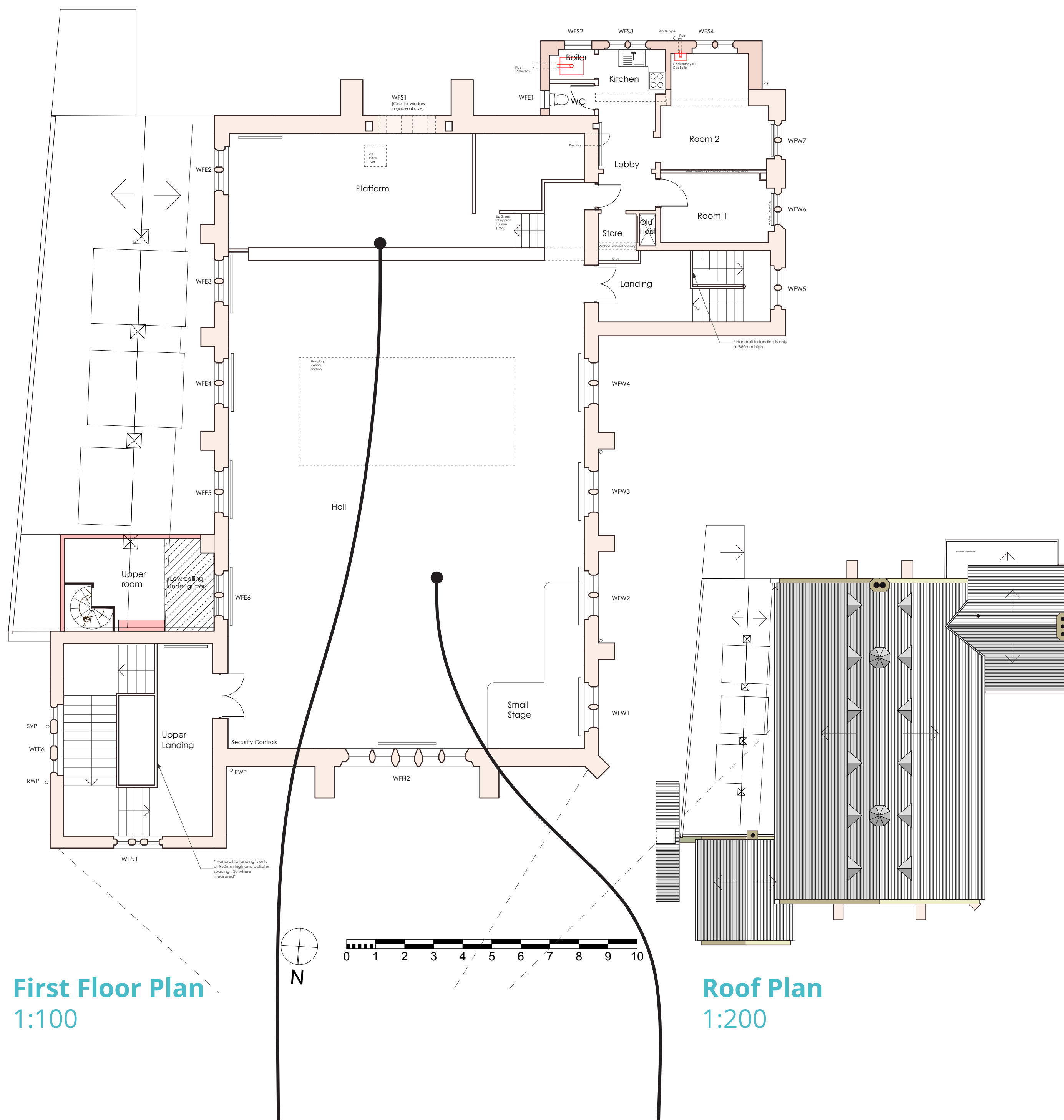
The main ground floor office room used by the previous owners.



The central corridor.



The imposing Early Gothic gables of the main Bennett Road frontage.



First Floor Plan
1:100

Roof Plan
1:200



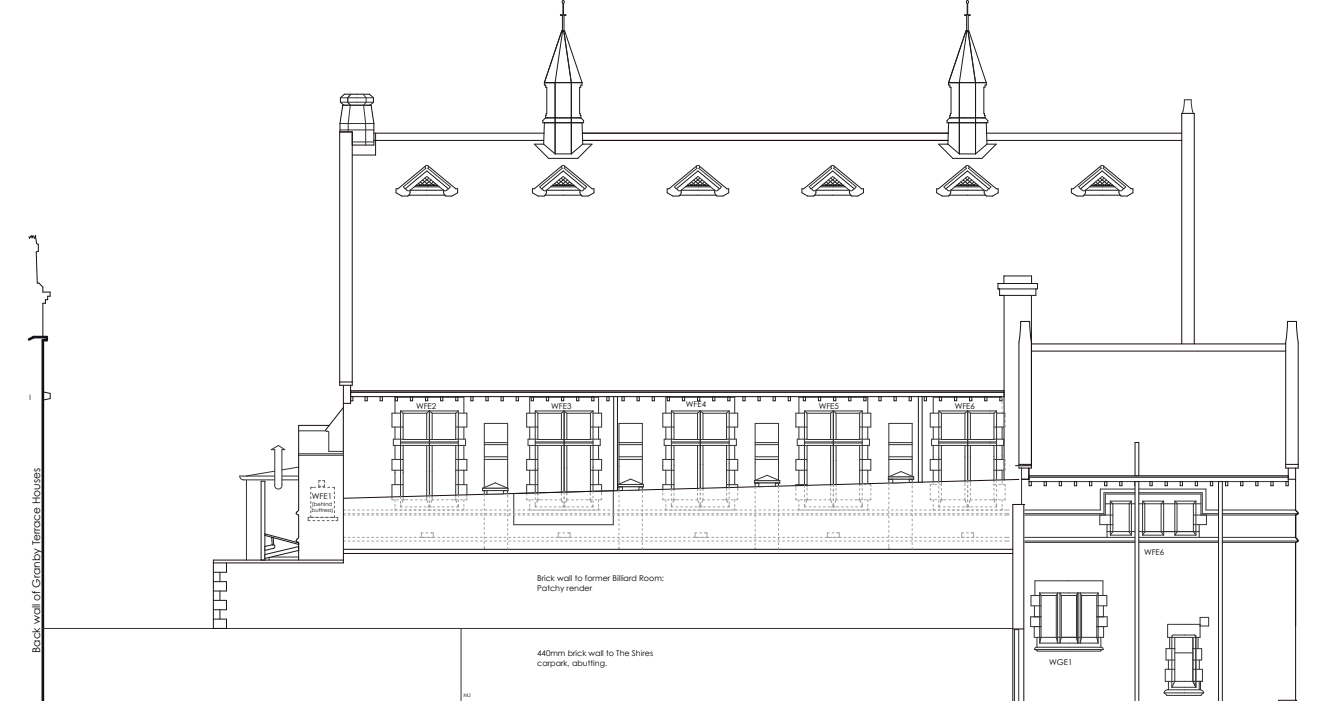
North Elevation 1:200



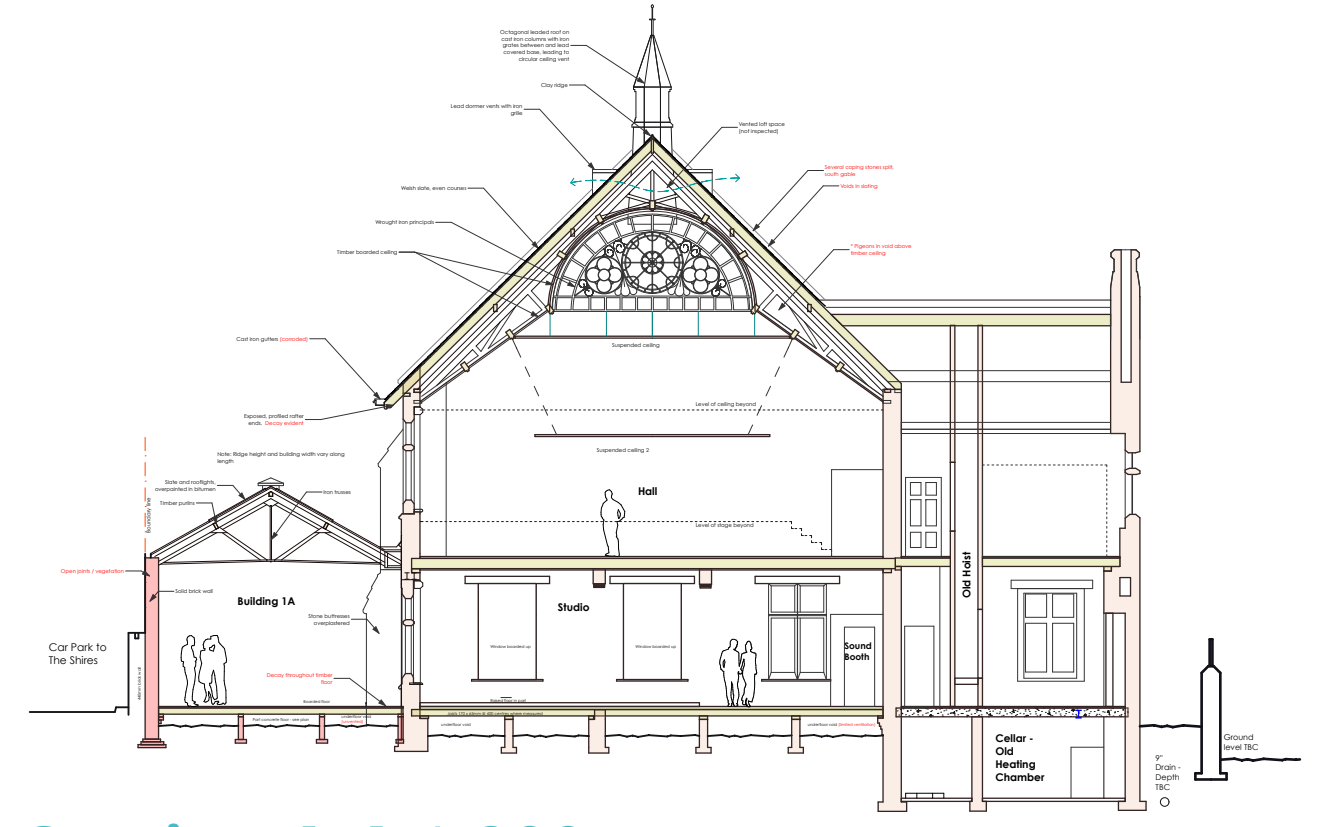
West Elevation 1:200



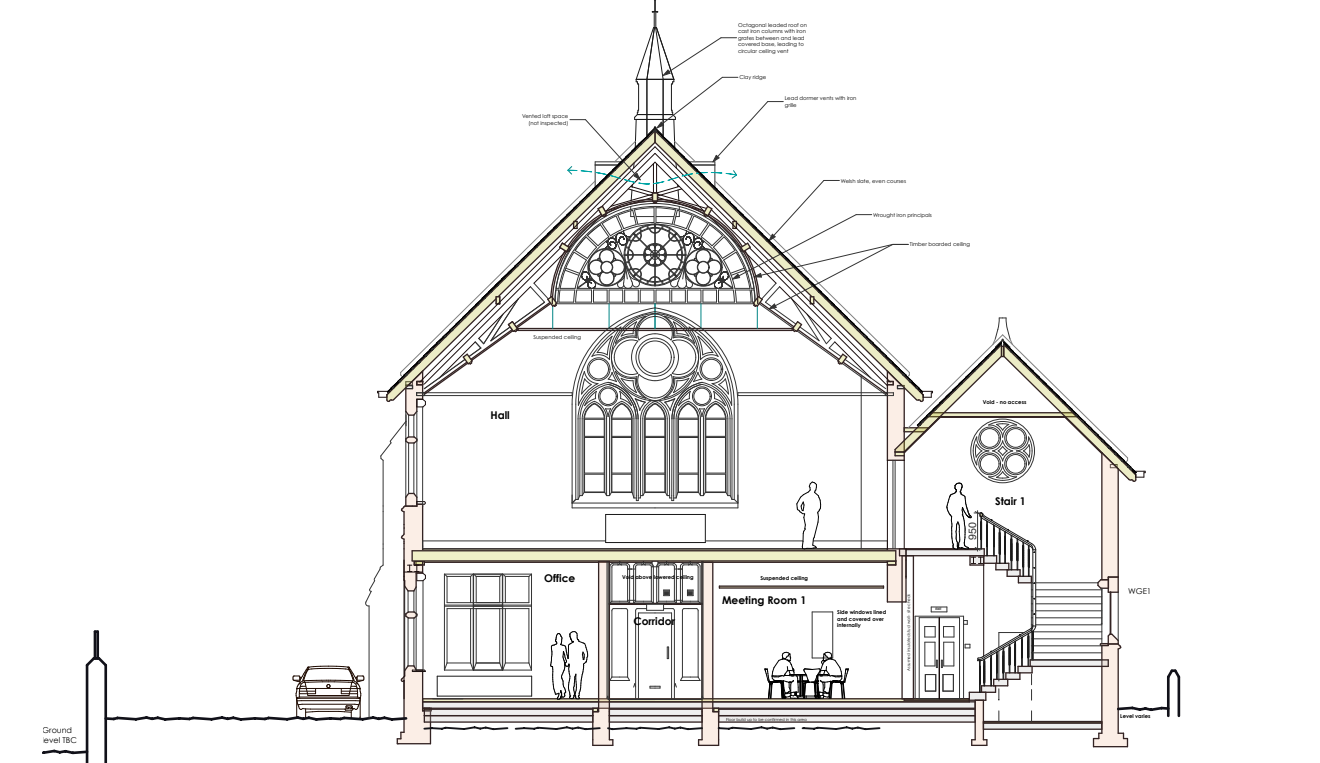
South Elevation 1:200



East Elevation 1:200



Section A-A 1:200



Section B-B 1:200



The original decorative iron trusses of the main hall, hidden away above a suspended ceiling. They were manufactured by Dawson & Nunneley of Hunslet, Leeds.



The beautifully simple back staircase with concrete treads, twisted wrought iron balusters and mahogany handrail. The rail to the landing is too low to be safe guarding against fall and the gaps between the balusters are above 100mm, meaning a child's head could get stuck between.



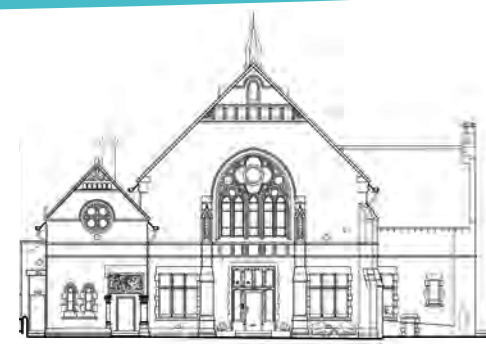
The main hall - a wonderfully flexible space waiting to be brought back into use.



The geometrical tracery and intricate decorative coloured glass window of the hall north gable, in need of sensitive, specialist repairs.



The back rooms of the first floor - originally called 'Retiring Rooms', understood to have been used as student accommodation in more recent times.



Leeds Vineyard

Leeds Vineyard was planted out of South West London Vineyard twenty years ago and has become firmly established in North Leeds. In 2013 David and Alison Flowers (the Founding Pastors) felt God call them to "make Headingley our Home and our Hub". Thanks to the hospitality of Headingley Methodist Church, Leeds Vineyard has successfully established a place of worship and ministry in Headingley. The next phase for Leeds Vineyard is to renovate the former St Michael's Parochial Institute, retaining and enhancing the existing features whilst creating a safe, purposeful and accessible home and providing much needed space for current and future activities.

This is a million-pound project, hugely ambitious and faith stretching in every way! But we are encouraged to:

Trust in the Lord with all your heart and lean not on your own understanding; in all ways submit to him and he will make your paths straight. Proverbs 3:5-6

David and Alison, with the support of the Wharfedale Vineyard Trustees (our holding charity) and the Leadership Group, have now purchased the former Parochial Institute.

What is Vineyard House?

Originally a Parochial Institute for nearby St Michael's Church, built in 1883 and designed by George Corson. Leeds Vineyard took ownership on 10 December 2018.

The building has been renamed "Vineyard House", and will be returned to its former glory and with a purpose to serve the community once more.

The renovation of this famous Headingley building will allow us to create a dynamic variety of spaces in which we can respond to local needs and nurture change in people's lives.

Vision

We believe God has called us to establish a community of faith in Headingley which, through Vineyard House, will communicate God's love, mercy and compassion to all people.

We will establish Vineyard House as an iconic building bringing life, light, music and hospitality to the Headingley community. A safe space in which Christian compassion finds full expression. A place where the stranger is welcome, where anyone can pray, where the lonely and vulnerable will feel safe.

Rooms will echo with the joyful sounds of young people and children at home, music will be played and art created. The building will radiate warmth for those seeking support and help, the hungry will be fed and the refugee befriended.



How will the building be transformed?

Much needed youth and child-friendly space for mid-week and weekend activities for young people, families and children of Headingley

Much needed space for Leeds Vineyard's church youth aged 7 - 18

A permanent place of prayer with specifically allocated space and resources

A resource centre for services to local people: food and clothing, counselling, debt advice, support for those without a permanent home and much more

A fully accessible, vibrant and open space for the local community of all ages

Permanent and improved space for the growth of The Vine Child Contact Centre

Space and facility for students and young people to explore their musical talents

Space for the young

Leeds Vineyard has been in Headingley for over five years now and the church community comes with an extensive track record of running parent and baby groups, children's groups and carrying out youth and student work. As a church they are committed to providing a safe and caring environment for children, young people and vulnerable adults who choose to attend.

Through Vineyard House, Leeds Vineyard will create safe, welcoming events and spaces where children, young people and families can come together. At the moment there is very little provision for this in the area. Through activities at Vineyard House, Leeds Vineyard will provide the building blocks for firm family foundations and will reach out to families who might otherwise feel isolated, building relationships and providing support.



Space to heal the brokenness in family relationship

Leeds Vineyard has run a Child Contact Centre for eight years and is a member of the National Association of Child Contact Centres (NACC). Called The Vine, it provides a safe, friendly and neutral place where children of separated parents can meet their non-resident parent or other family members. The Child Contact Centre is currently operating from Headingley Methodist Church on a Saturday and has to share space, so set up, timings and what The Vine can offer to families is limited.

Vineyard House will allow The Child Contact Centre to have a permanent, modern and better equipped home with designated storage space for the continuation and growth of this valuable service. The Vine currently supports over a dozen families at a time, receives several referrals a month and nearly always operates a waiting list. One professional has shared the thoughts and feelings of a young person and their parents about The Vine;

"Having the Vine service has allowed my child to develop a better relationship with her dad because his time with her... is just for her. This means that when the order is over then we have a good foundation to build on. If the Vine were not running this service, then my child would not have been able to see her father for a full twelve months and we would probably have had to return to court to facilitate contact. I feel confident leaving my child at the Vine and it is obvious that everyone involved has the best interests of the child at heart."



Space for the local area

Leeds Vineyard won't be using all the new space it creates all the time. This provides an opportunity for the local community, other charities, churches and schools to carry out more of their work and activities in the area. It could be used for family games evenings, as a children's party venue, holiday clubs, for music, art and other creative therapies.

Preventing poverty and family breakdown has always been at the heart of Leeds Vineyard's activities, Matt Button, one of The Vine Trustees and local GP has said this about the debt advice service which operated for five years and about the child contact centre which is so desperately in need of an improved and specially designed space.

"As one of The Vine trustees, I am in a privileged position to hear the reports and stories coming out of both the debt advice and child contact centres. I am constantly amazed at the incredible impact both centres are having in our local communities - from children getting to see their dads after a long period of absence to families being set free from the shackles of debt."

By renovating St Michael's Hall and creating Vineyard House we will be able to do more for families in the area. We will look to provide solutions to help people take control of their finances and provide support with life's essentials.

Space for children's and young people's ministry

Leeds Vineyard currently gather scores of young people and children on Sundays at Headingley Methodist Church. The space available is not fit for purpose for the numbers of children attending and doesn't allow for creativity or full enjoyment of what this time could be. The ages of 7 right up to 18 is a key time as children and young people choose whether to follow Jesus or not. Creating a space which is fun, age-appropriate with improved visual stimulus and access to games will not only help Leeds Vineyard youth engage with each other, but also with Jesus and their faith. It will also allow more space and opportunities for the under 7's. Once established this will become a major resource for the local community too.



Space for prayer

Leeds Vineyard, a vibrant and expanding church community which commits itself to many forms of prayer will establish a dedicated prayer room. In creating a space for prayer, Vineyard House will become known as a House of Prayer which both provides everyone with an opportunity to pray and also becomes a beacon of God's Kingdom in Headingley.

We want the prayer space in Vineyard House to be used by everyone in Headingley from young to old, by local school groups and the homeless and to see lives transformed.





These plans are at an early design stage and show the initial ideas for the building. The plans will be developed in consultation with various stakeholders, specialist consultees and interested parties as well as with Leeds City Council Conservation Officers.

Not too dissimilar to the building's past, new life will be breathed into it enabling the building to stand proud as an iconic space for the community once more. We think George Corson and those connected with the building's past would be pleased.

The ground floor of Vineyard House is shaping up around the following key spaces;

The Workspace – the business component taking up about a third of the ground floor.

The Living Room – the communal space, multi-functional/pop-up style, taking up most of the ground floor (this is where the Child Contact Centre may be based).



The 1893 extension is rebuilt as The Living Room space, with a new roof and openings to the old photography studio space, becoming the communal hub of the building. The sketch impression above is an early idea about how this space might feel.

The dilapidated toilets at the rear of the 1893 extension are removed and a new garden room created with access to a landscaped patio garden.

Creating a new outside area to the south of the building in what is currently an overgrown, unused area of ground.

Providing for sustainable travel options, including cycle storage and a shower facility.

Increasing and improving toilet provision for the ground floor spaces.

Electric vehicle charge point.

Disabled parking place.

Visitor cycle parking.

New catering kitchen with serving hatch.

Accessible toilet facilities.

New lift and lobby into either the workspace or the Living Room.

A new reception welcomes people to the building, with Prayer Room beyond, at the front of the building.

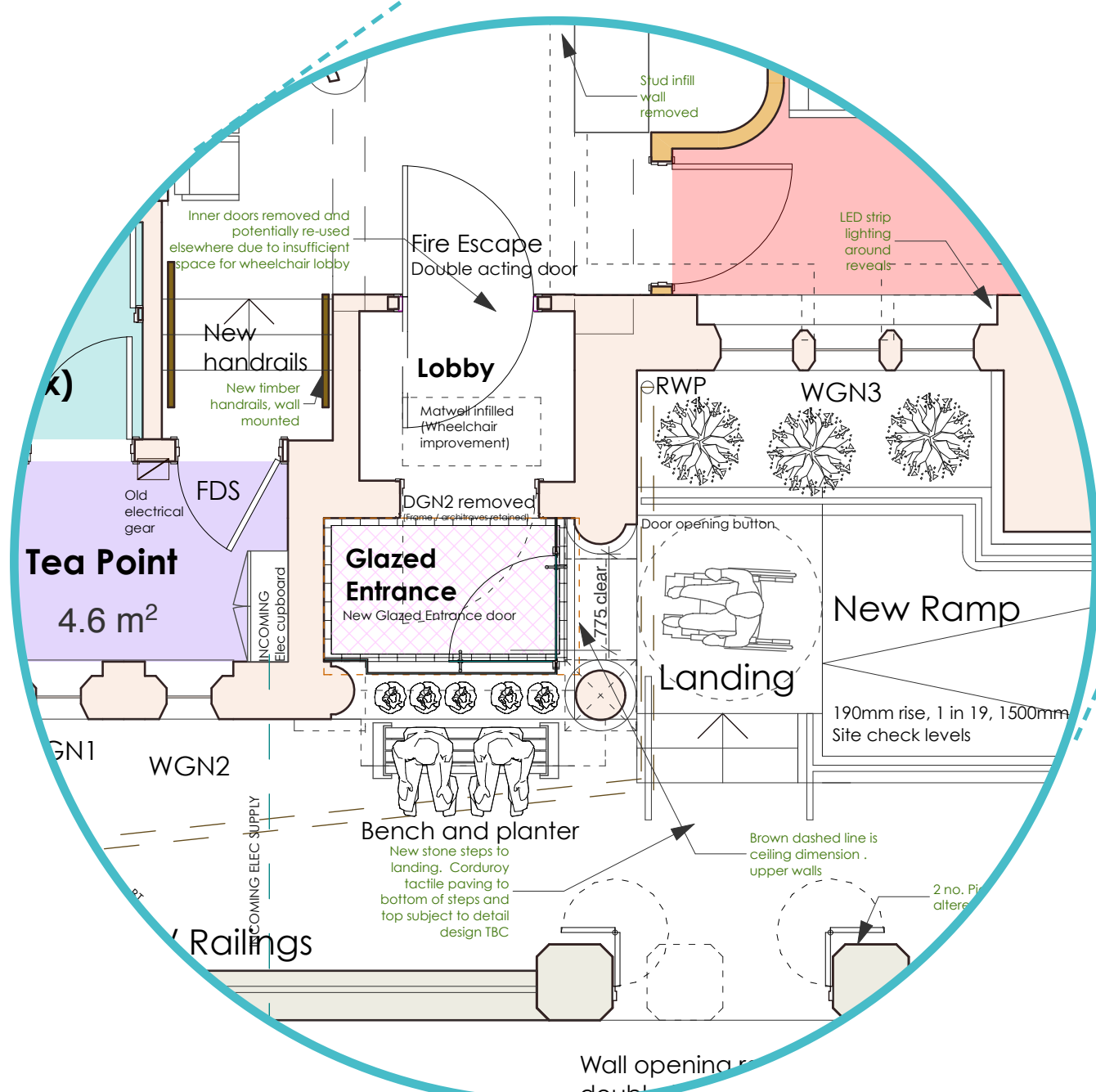
The new lobby arrangement improves navigation for wheelchairs. The existing lobby arrangement restricts wheelchair access.

A bench and planter near the entrance.

A new shallow ramp to access the raised ground floor level.

The cast iron Victorian lamppost brought back into use with a new lantern top.

New gates and railings to improve the street frontage and to help make the site more secure for children etc.



Glass lobby plan detail
This design proposal keeps the glass behind the details of the column capitals whilst giving the clear opening required for access. The lobby becomes long enough for wheelchair users. (Scale 1:50)

Ground Floor Plan 1:100

Key to wall colours on plan:

	1883 Original
	1893
	1895 and Later 1940s above
	Proposed new walls

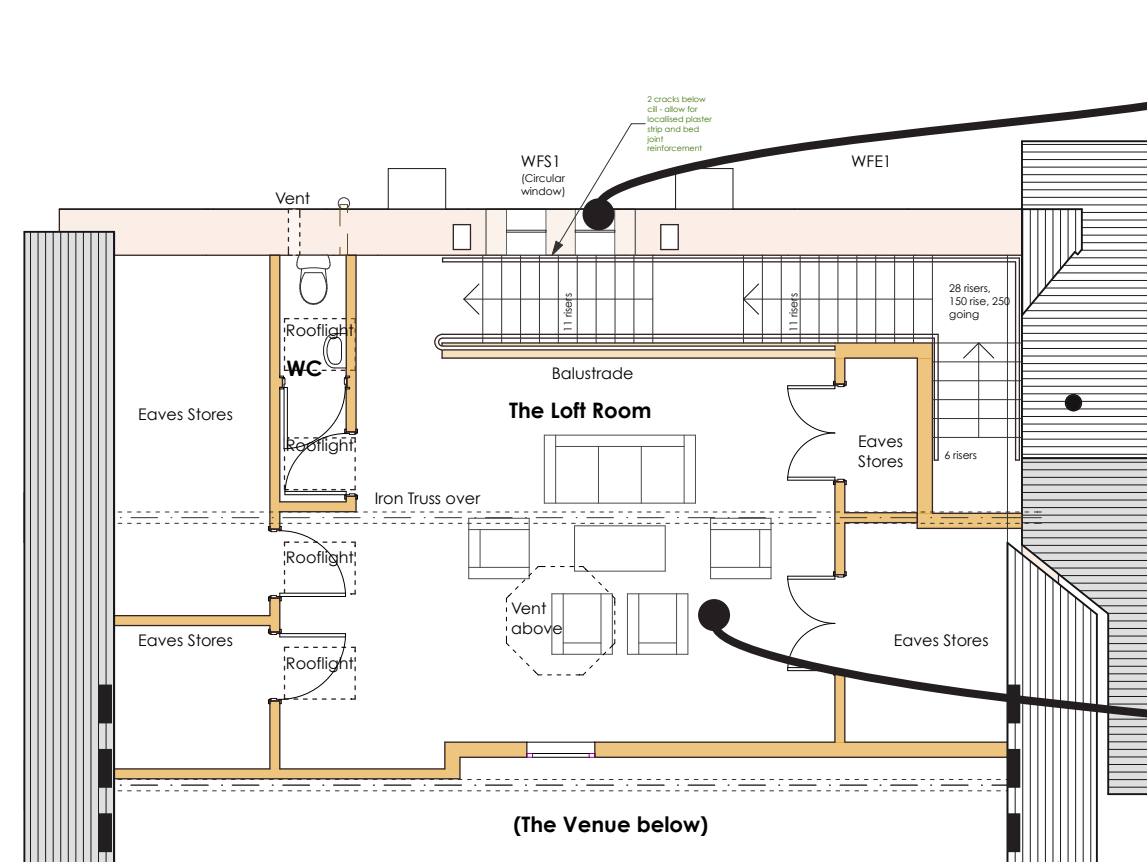
N 0 1 2 3 4 5



The first floor of Vineyard House is shaping up around the following key spaces;

The Venue – hosting events and large groups, children & youth work, community events and taking up most of the top floor.

The Sanctuary – specially equipped classroom and safe place with laundry, shower, clinic etc. this will take up about a quarter of the top floor.



The round gable quatrefoil window requires specialist repairs and the aspiration is to reinstate the three missing windows to match the single remaining original quadrant.



Window WFS1 as existing

Loft Floor Plan 1:100

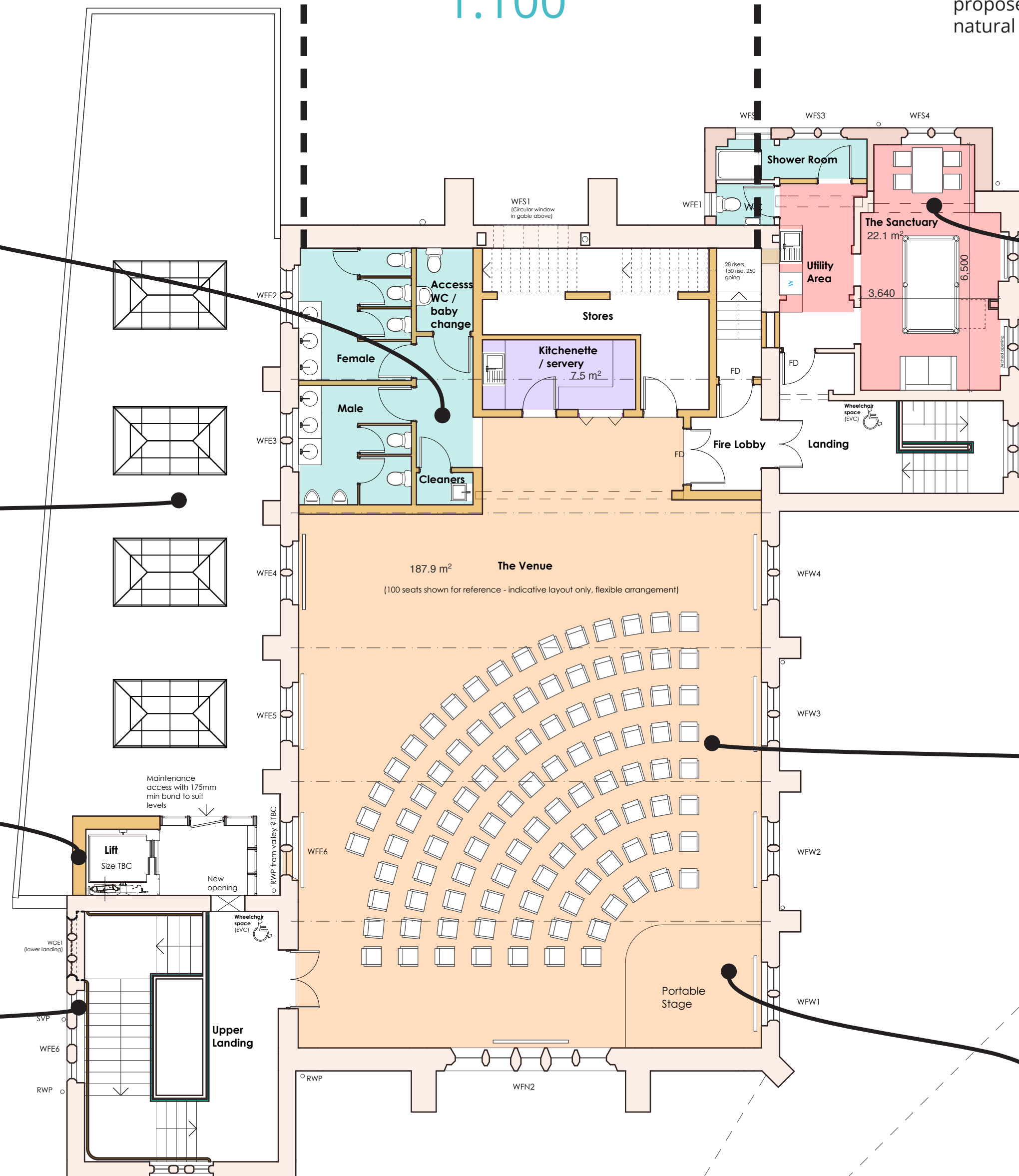
The ideas include creating a loft room above new facilities to serve the hall. A new protected staircase leads up to the loft room, a new flexible space for a variety of supplementary uses. New conservation roof-lights are proposed in this rear part of the roof to provide natural light and ventilation to the loft room.

At first floor, new toilets, servery and storage provide much needed facilities to serve The Venue.

A new 'flat' roof with lantern lights and maintenance access to replace the failed pitched roof and inaccessible valleys.

A new lift will create a fully accessible first floor for the first time in the history of the building!

Supplementary handrails to increase the safety and accessibility of the stairs and landings.



The Sanctuary area, shown with a billiard table, sofa and table / 4 chairs to give an idea of the size of this facility. A new shower room, WC and utility area are created.

Flexible seating arrangements together with large stores at the rear to move the chairs from the hall. This layout shows 100 seats to give an idea of the size of The Venue.

Removable stage area.

First Floor Plan 1:100



The long term aspiration for the first floor is to reinstate the original ceiling line and expose the ornate iron trusses. This involves removing the suspended ceiling and insulating in the void above. This is a major project and involves re-roofing the building to give full access to the roof voids.

The artist's impression on the left gives a flavour of what the hall space might be like with new lighting, flexible seating and suspended ceilings removed. The iron trusses may need to be protected from fire with intumescent paint (subject to Building Control requirements).

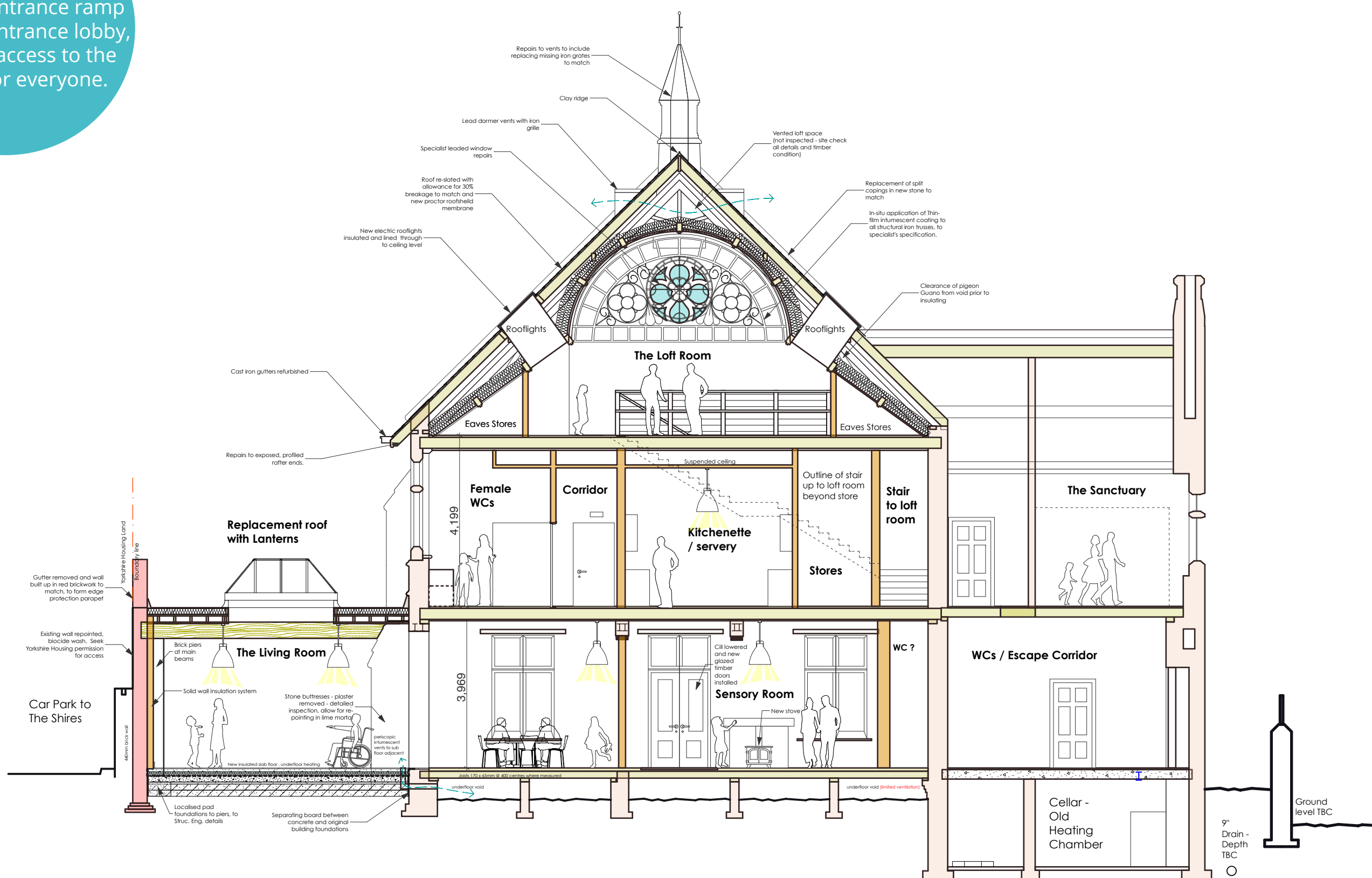
Key to wall colours on plan:

	1883 Original
	1893
	1895 and Later 1940s above
	Proposed new walls





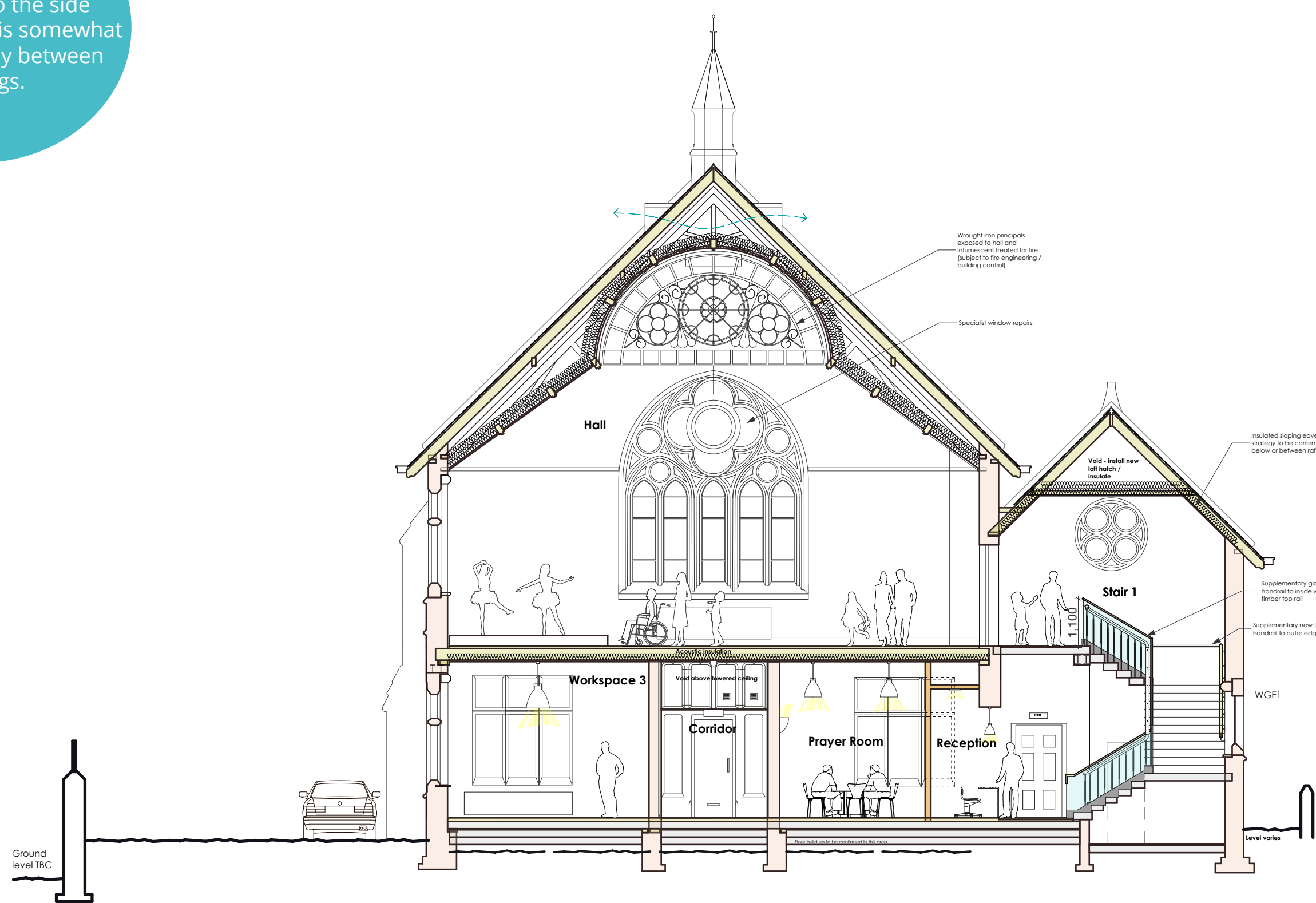
This image shows an impression of a new accessible entrance ramp and glazed entrance lobby, enhancing access to the building for everyone.



Section A - A
1:100



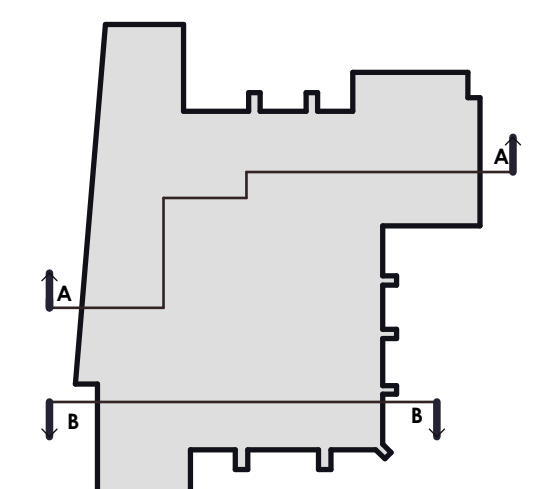
This image shows the idea of a new gate and railings to the side yard, securing this somewhat hidden alleyway between buildings.



Section B - B
1:100



Staircases in historic buildings are often below standards of modern safety for new public buildings and efforts must be made to improve accessibility and safety. This Grade II listed building in Bradford has a glass balustrade in front of the old handrail to preserve the original features whilst creating a safe, contemporary and reversible addition to the stair. A similar approach is being considered for Vineyard House.



Section Key Plan